



MELBOURNE CAMERA CLUB

Melbourne Camera Club Evacuation Procedure

Emergency Evacuation Procedure – MCC

Evacuation and exit signs are installed in every room of the club. In the event of an emergency (e.g. fire, chemical spill, electrical fault), follow the instructions on these signs. They indicate:

- Exit routes
- Assembly point location
- Fire extinguishers and hoses
- Electrical switchboard
- Smoke detectors
- First aid kits

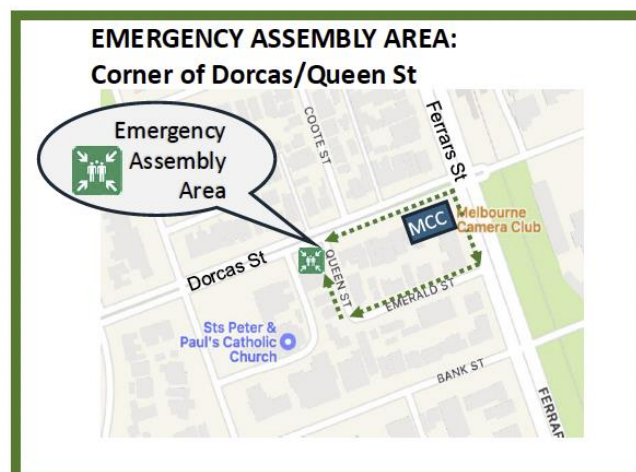
Exits by Area:

- **First Floor (Gallery, Office, Kitchen):**
 - Main staircase to Dorcas Street
 - External staircase (south wall of the Gallery) to Ferrars Street
- **Ground Floor (Studio, Kitchen, Darkroom):**
 - Main entrance to Dorcas Street
 - Emergency exit through the annex to Ferrars Street

Assembly Point:

All evacuees must gather at the MCC assembly point on **Dorcas Street**, near the **corner of Queen Street**.

Stay calm. Identify your location, follow the green arrows on the signs, and proceed quickly and safely to the assembly point.



EVACUATION DIAGRAM

IN CASE OF FIRE EMERGENCY PROCEDURES

Remove People

Remove people from
the immediate Danger
Area

Alert the Fire Service

And nearby residents
and members of the
public

Complete Evacuation of
Entire Complex to
Emergency Assembly
Area: Cnr Dorcas &
Queen St

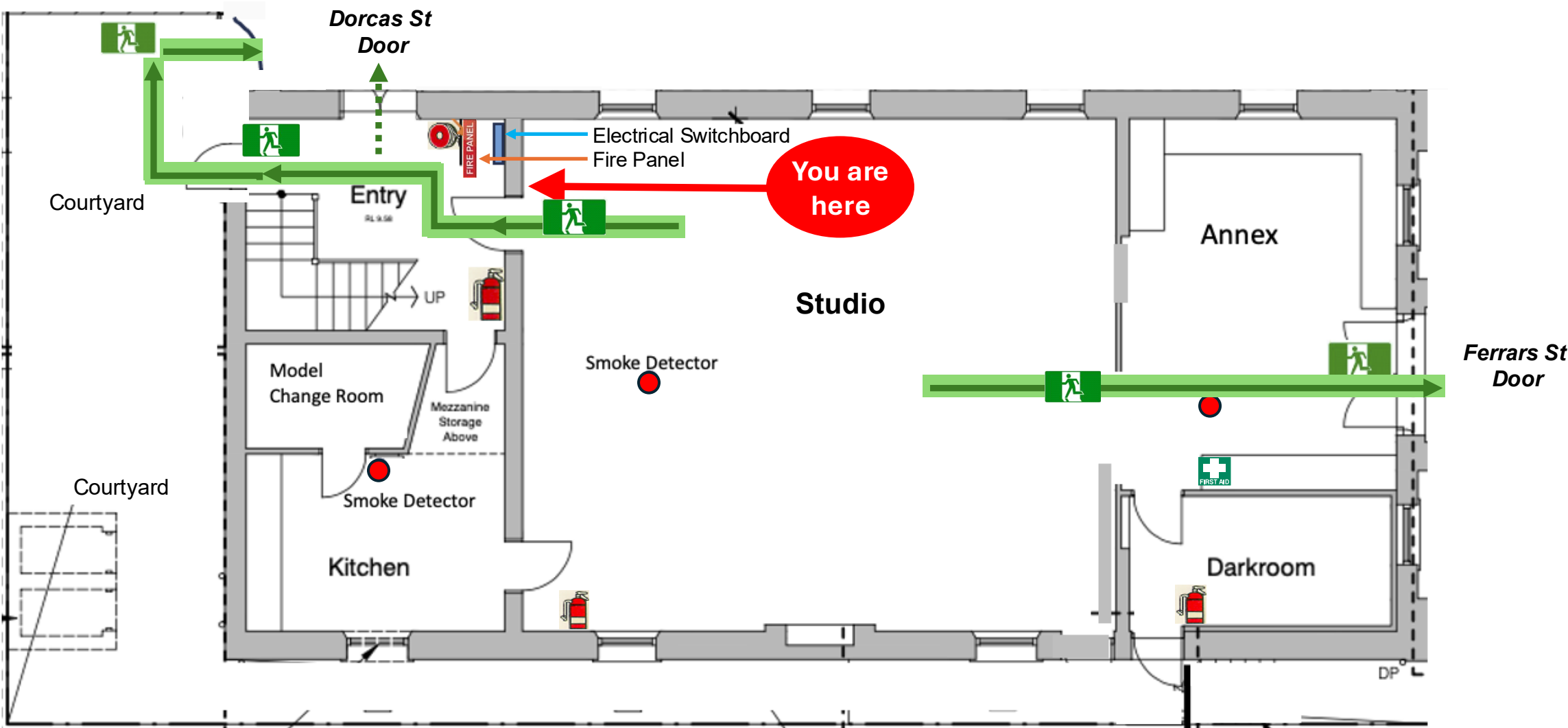
Roll Call to be
conducted as soon as
possible to ensure all
persons are accounted
for. Report any missing
persons to FIRE OFFICERS



MELBOURNE CAMERA CLUB
254-256 Ferrars Street, South Melbourne, VIC 3205

GROUND FLOOR – STUDIO

Date: 23-Jul-2024
Valid Until: 23-Jul-2029



Legend

	Fire Extinguisher		First Aid
	Fire Hose Reel		AED Device
	Fire Indicator Panel		Emergency Exit
	Electrical Switchboard		Assembly Area
	Smoke Detector		Primary Exit Path
			Secondary Exit Path

EMERGENCY ASSEMBLY AREA: Corner of Dorcas/Queen St



EVACUATION DIAGRAM

IN CASE OF FIRE EMERGENCY PROCEDURES

Remove People

Remove people from
the immediate Danger
Area

Alert the Fire Service

And nearby residents
and members of the
public

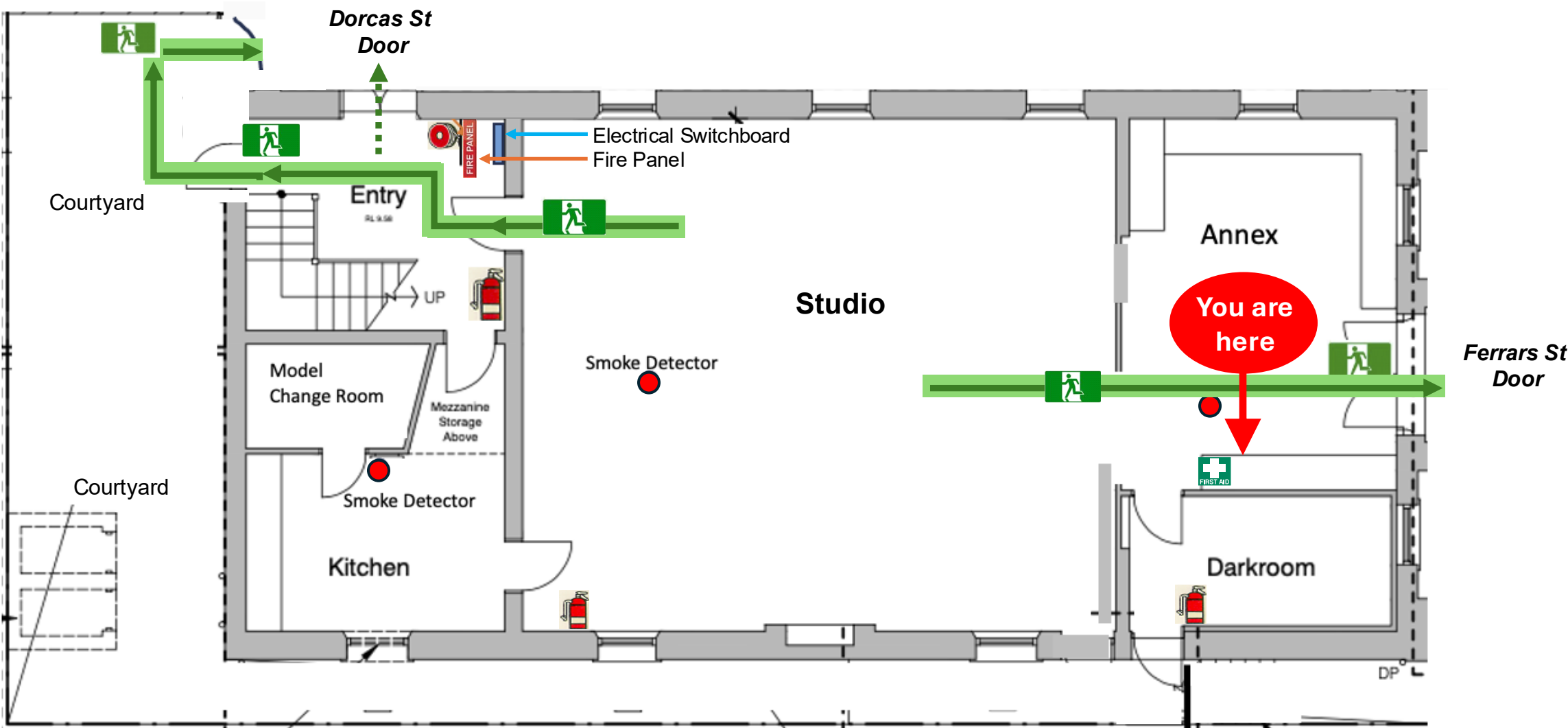
Complete Evacuation of
Entire Complex to
Emergency Assembly
Area: Cnr Dorcas &
Queen St

Roll Call to be
conducted as soon as
possible to ensure all
persons are accounted
for. Report any missing
persons to FIRE OFFICERS



MELBOURNE CAMERA CLUB
254-256 Ferrars Street, South Melbourne, VIC 3205
GROUND FLOOR – ANNEX

Date: 23-Jul-2024
Valid Until: 23-Jul-2029



Legend

	Fire Extinguisher		First Aid
	Fire Hose Reel		AED Device
	Fire Indicator Panel		Emergency Exit
	Electrical Switchboard		Assembly Area
	Smoke Detector		Primary Exit Path
			Secondary Exit Path

EMERGENCY ASSEMBLY AREA: Corner of Dorcas/Queen St



EVACUATION DIAGRAM

IN CASE OF FIRE EMERGENCY PROCEDURES

Remove People

Remove people from
the immediate Danger
Area

Alert the Fire Service

And nearby residents
and members of the
public

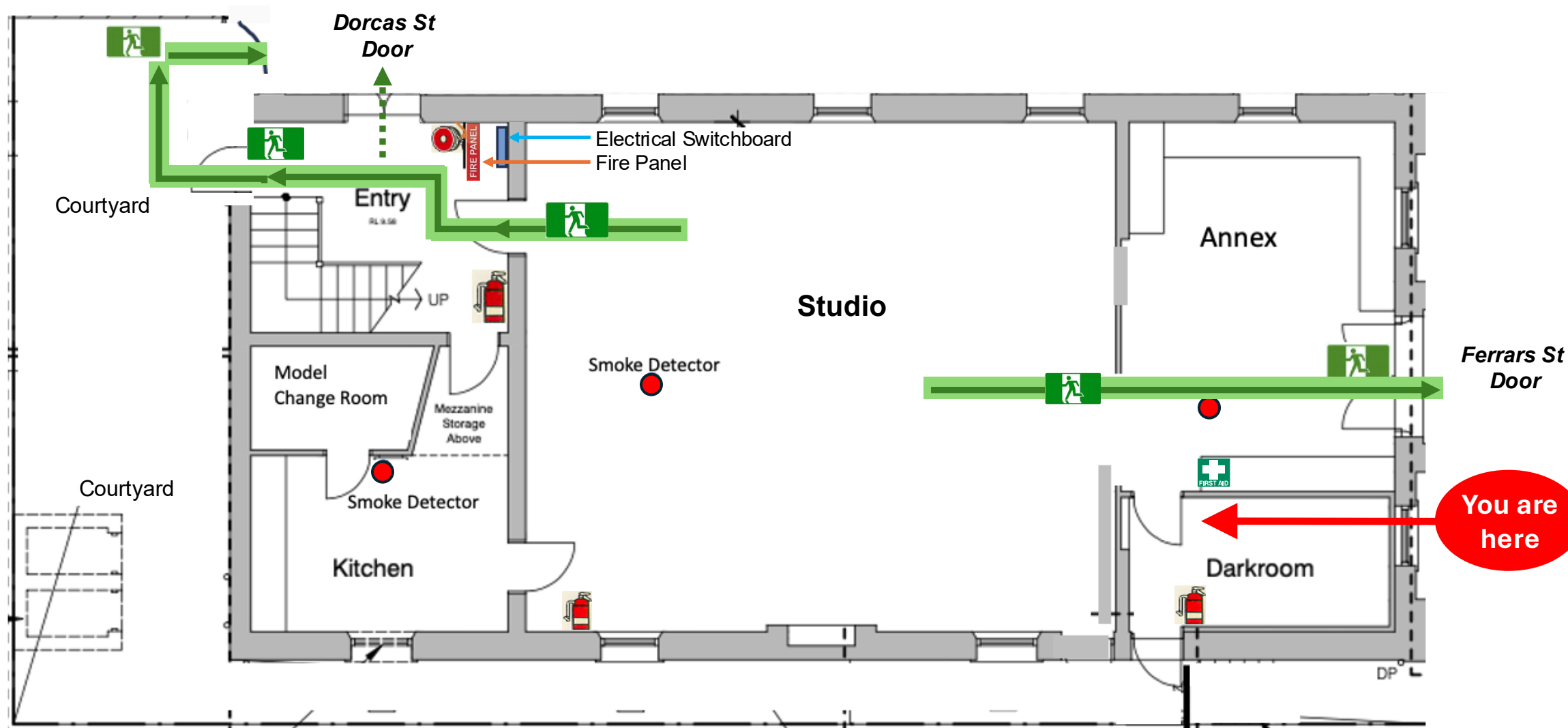
Complete Evacuation of
Entire Complex to
Emergency Assembly
Area: Cnr Dorcas &
Queen St

Roll Call to be
conducted as soon as
possible to ensure all
persons are accounted
for. Report any missing
persons to FIRE OFFICERS



MELBOURNE CAMERA CLUB
254-256 Ferrars Street, South Melbourne, VIC 3205
GROUND FLOOR – DARKROOM

Date: 23-Jul-2024
Valid Until: 23-Jul-2029



Legend

	Fire Extinguisher		First Aid
	Fire Hose Reel		AED Device
	Fire Indicator Panel		Emergency Exit
	Electrical Switchboard		Assembly Area
	Smoke Detector		Primary Exit Path
			Secondary Exit Path

EMERGENCY ASSEMBLY AREA: Corner of Dorcas/Queen St



EVACUATION DIAGRAM

IN CASE OF FIRE EMERGENCY PROCEDURES

Remove People

Remove people from
the immediate Danger
Area

Alert the Fire Service

And nearby residents
and members of the
public

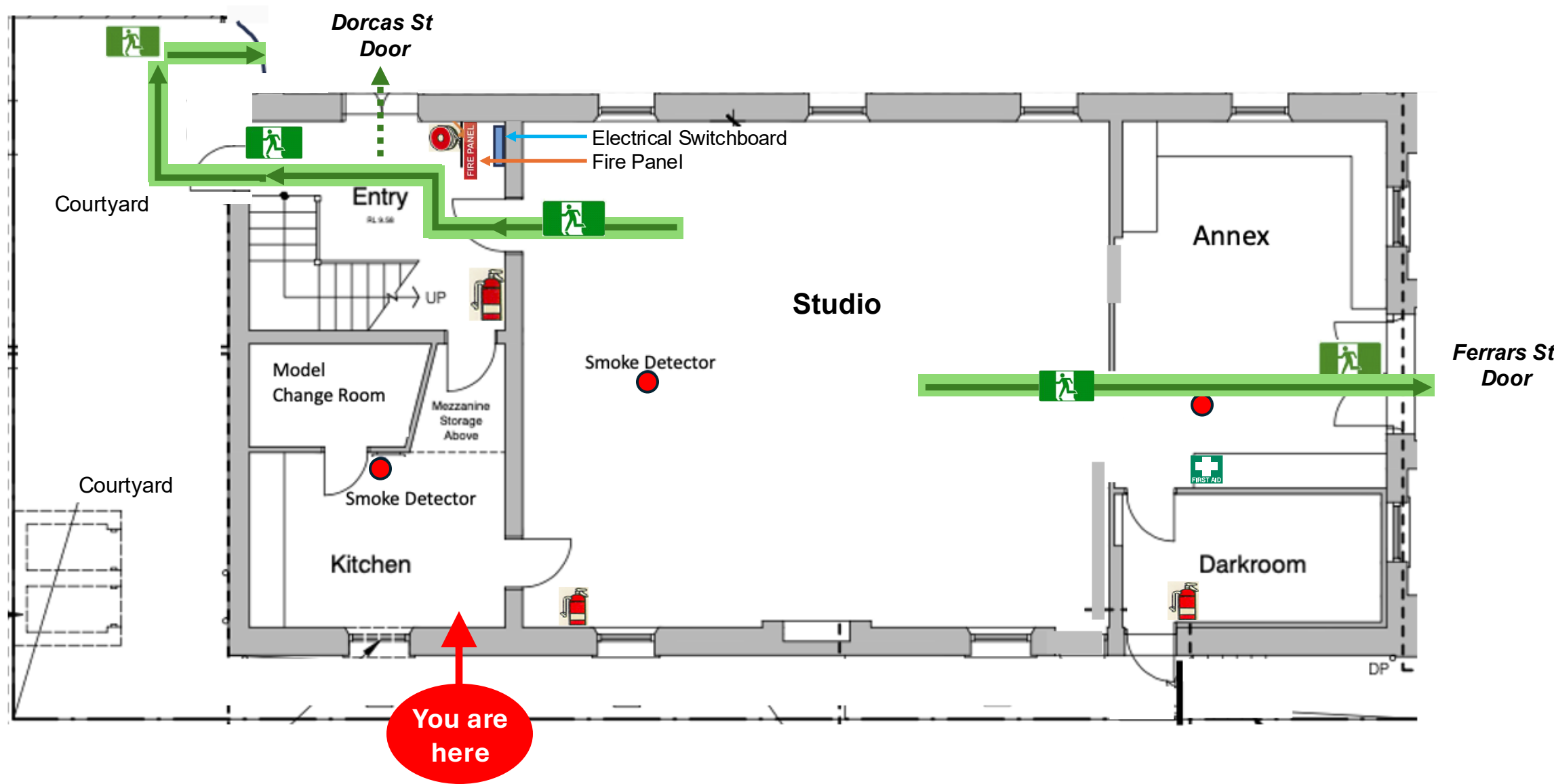
Complete Evacuation of
Entire Complex to
Emergency Assembly
Area: Cnr Dorcas &
Queen St

Roll Call to be
conducted as soon as
possible to ensure all
persons are accounted
for. Report any missing
persons to FIRE OFFICERS



MELBOURNE CAMERA CLUB
254-256 Ferrars Street, South Melbourne, VIC 3205
GROUND FLOOR – KITCHEN

Date: 23-Jul-2024
Valid Until: 23-Jul-2029



Legend

	Fire Extinguisher		First Aid
	Fire Hose Reel		AED Device
	Fire Indicator Panel		Emergency Exit
	Electrical Switchboard		Assembly Area
	Smoke Detector		Primary Exit Path
			Secondary Exit Path

EMERGENCY ASSEMBLY AREA: Corner of Dorcas/Queen St



EVACUATION DIAGRAM

IN CASE OF FIRE EMERGENCY PROCEDURES

Remove People

Remove people from
the immediate Danger
Area

Alert the Fire Service

And nearby residents
and members of the
public

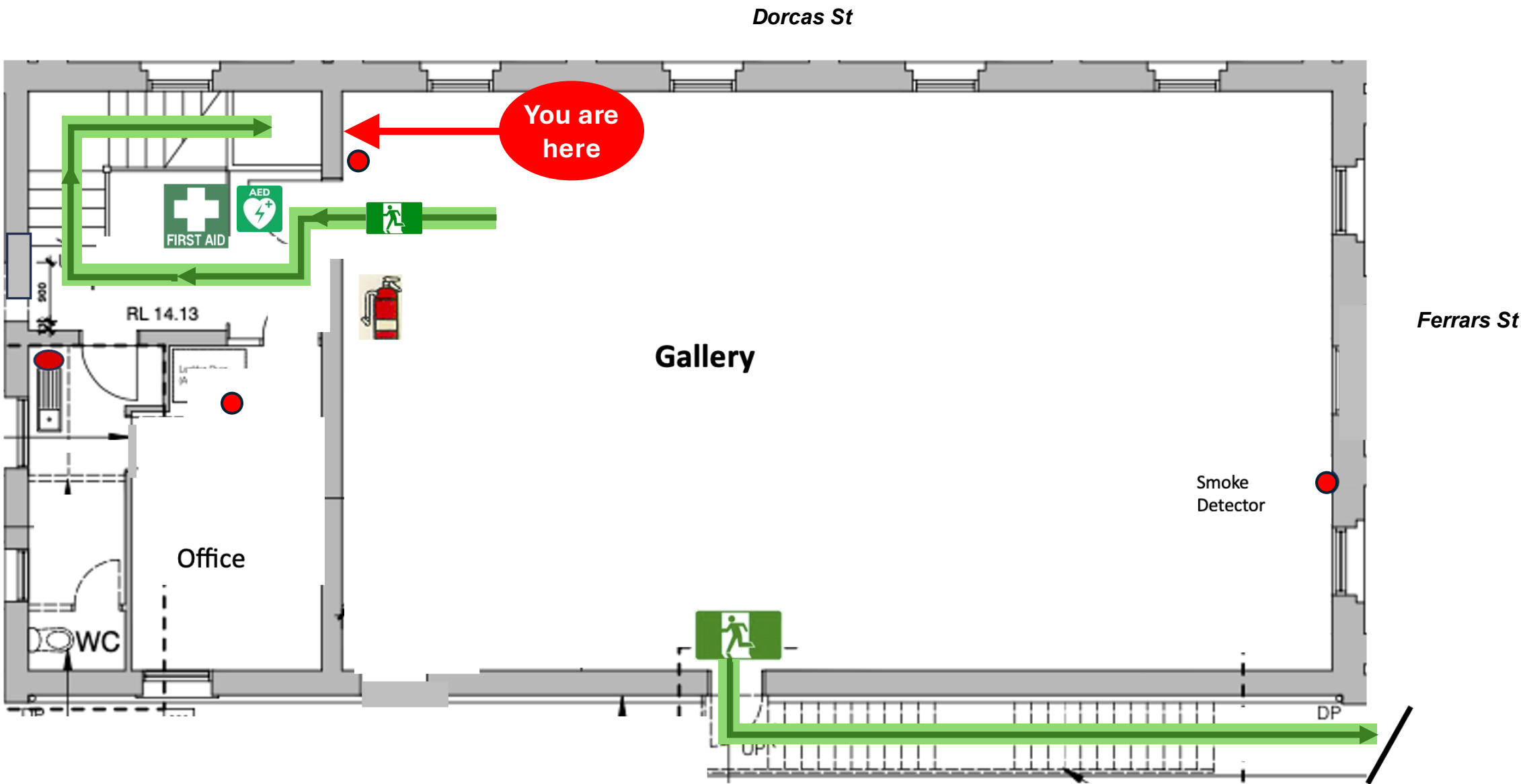
Complete Evacuation of
Entire Complex to
Emergency Assembly
Area: Cnr Dorcas &
Queen St

Roll Call to be
conducted as soon as
possible to ensure all
persons are accounted
for. Report any missing
persons to FIRE OFFICERS



MELBOURNE CAMERA CLUB
254-256 Ferrars Street, South Melbourne, VIC 3205

FIRST FLOOR – GALLERY



Legend

	Fire Extinguisher		First Aid
	Fire Hose Reel		AED Device
	Fire Indicator Panel		Emergency Exit
	Electrical Switchboard		Assembly Area
	Smoke Detector		Primary Exit Path
			Secondary Exit Path

EMERGENCY ASSEMBLY AREA: Corner of Dorcas/Queen St

