

Mid-Week Outing Group

2022 Photo Album

(1 Aug 2022 - v06)

2022 Outings

Tue 1 Feb	Wildlife Photography Exhibition, Geelong
Tue 15 Feb	Monash Gallery of Art
Tue 1 Mar	City West, Melbourne CBD
Tue 22 Mar	Maranoa Botanic Gardens
Tue 5 Apr	Heide Museum of Modern Art
Wed 27 Apr	Jells Park
Tue 3 May	Melbourne Photo 2022, Melbourne CBD
Wed 18 May	2021 Nikon-Walkley Press Photography Exhibition
Tue 7 Jun	Immigration Museum, Melbourne CBD
Tue 21 Jun	Michael Silver's Magnet Gallery
Tue 5 Jul	Bathing Boxes, Brighton
Tue 19 Jul	Collins Street Walk, Melbourne CBD
Tue 2 Aug	Serendip Sanctuary, Lara
Tue 23 Aug	State Library, Melbourne CBD
Tue 6 Sep	
Tue 20 Sep	Dandenongs (TBC)
Tue 4 Oct	
Tue 18 Oct	Science Works (TBC)
Wed 2 Nov	
Tue 15 Nov	
Tue 6 Dec	

Wildlife Exhibition, Geelong

Mid-Week Outing Group

1 Feb 2022

The first Melbourne Camera Club Mid-Week Outing for 2022 will be held on Tuesday 1st February.

We plan to visit the annual Wildlife Photographer of the Year exhibition at Geelong's National Wool Museum.

Also in Geelong, is "Archie 100: A Century of the Archibald Prize" at the Geelong Gallery. So there are 2 really worthwhile exhibitions on in Geelong, but probably only time to see one. The outing is to the Wildlife Photographer exhibition – but if you would prefer to go to Archie 100, that's okay, you can.

We will travel by train from the Southern Cross station. The 9.30 am train is scheduled to arrive at 10.29 in Geelong. Please give yourselves plenty of time to purchase your ticket & find the right platform. If you hold a Seniors Card you can use your "off-peak travel voucher". Return trains leave Geelong at 2.30 & 2.48 pm, arriving back at Southern Cross at 3.35 & 3.55 pm respectively. However, the train service is good, and there are plenty of other options.

The outing will be run in a Covid Safe way, so the Melbourne Camera Club will keep the appropriate records. We require participants to be at least double vaccinated, and also abide by the Wool Museum's &/or the Gallery's covid requirements.

We have a reciprocal arrangement with the Camberwell Camera Club for our Mid-Week Outings. Camberwell members are always welcome. For the 3rd Tuesday of February, Camberwell are planning a visit to the Monash Gallery of Art (MGA).

Hope to see you in Geelong on Tuesday 1st February.

Jim Weatherill

<https://www.nhm.ac.uk/wpy/gallery>

Attendees (15): Anne Shellard, Bert Hoveling, Bob Clothier, Carlene Gosbell, Gillian Turner, Hee Kang, Helen Lang, James Mexias, Jane Clancy, Jim Weatherill, John Mallett, Ken Gosbell, Marg Huxtable, Norman Blaikie, Susan Rocco



Grizzly leftover Zack decided these bull elk remains were an ideal spot to set a camera trap. Returning to the scene was challenging. Zack bridged gushing meltwater with fallen trees, only to find his setup trashed. This was the last frame captured on the camera. Grizzlies, a subspecies of brown bears, spend up to seven months in torpor – a light form of hibernation. Emerging in spring, they are hungry and consume a wide variety of food, including mammals
(Zack Clothier) <https://www.nhm.ac.uk/wpy/gallery/2021-grizzly-leftovers>



The intimate touch It was midwinter, the start of the ravens' breeding season. Shane lay on the frozen ground using the muted light to capture the detail of the ravens' iridescent plumage against the contrasting snow to reveal this intimate moment when their thick black bills came together (Shane Kalyn) <https://www.nhm.ac.uk/wpy/gallery/2021-the-intimate-touch>



© Laurent Ballesta

The squid finale As Laurent emerged from a diving bell 60 metres below the surface of the Mediterranean Sea, he spotted shadows cast by this mating pair of veined squid. Surprised by the rare sight, he took this photo of their entwined arms and tentacles. (Laurent Ballesta) <https://www.nhm.ac.uk/wpy/gallery/2021-the-squid-finale>



© Gil Wizen

Spinning the cradle Gil discovered this spider under loose bark. Any disturbance might have caused the spider to abandon its project, so he took great care. 'The action of the spinnerets reminded me of the movement of human fingers when weaving,' (Gil Wizen) <https://www.nhm.ac.uk/wpy/gallery/2021-spinning-the-cradle>

MGA – Visions of India

Mid-Week Outing Group

15 Feb 2022

Mid-Week Outing Excursion: Tuesday, 15th February

India has the reputation of being one of the most photographed countries in the world, but how it has been photographed over the years varies greatly.

The Monash Gallery of Art has an exhibition from the collection of the Museum of Art and Photography of Bengaluru (Bangalore).

It is titled 'Visions of India from the Colonial to the Contemporary'.

A visit there is the focus of this excursion.

Place: Monash Gallery of Art (MGA). cnr. Ferntree Gully road and Jells road (entrances from Jells or Ferntree Gully roads).

Time: 10.30am for coffee in the Wheelers Hill Hotel bistro overlooking the car park at the rear.

After viewing the exhibition, we plan to return to the hotel for lunch.

Covid regulations will apply.

Hope to see you there on the 15th.

Joe Hajdu

[MGA Website](#)

[Exhibition Details](#)

[MGA - Google Maps](#)

[Whealers Hill Hotel - Google Maps](#)

Attendees (10): Ian Bock, Jan Mallett, Jim O'Donnell, Jim Weatherill, Joe Hajdu, John Adlam, John Mallett, Judy Hajdu, Marg Huxtable, Robert Fairweather

Since its invention in Europe in the 1840s, the genre of photography has played an integral role in the course of Indian art history. Although it is often quoted that India is the most photographed country in the world, the history of its representation is more complicated, and more political than initially meets the eye.

Within just a few months of its invention, the camera arrived in the subcontinent at the height of British colonial rule. Photographs from the time typically served the colonial purpose of administration and control, and thus, often reflected colonial views. Over the subsequent few decades, and at an unprecedented scale, India – its landscapes, people, traditions and archaeological history – was catalogued for the colonial eye and transformed into a governable ‘object.’

Visions of India: from the colonial to the contemporary will be the first major survey of Indian photography in Australia, and all artworks showcased will be from the collection of Museum of Art & Photography (MAP), Bengaluru, which is one of the most celebrated photographic collections in India. The exhibition will be on view at MGA until 20 March 2022.

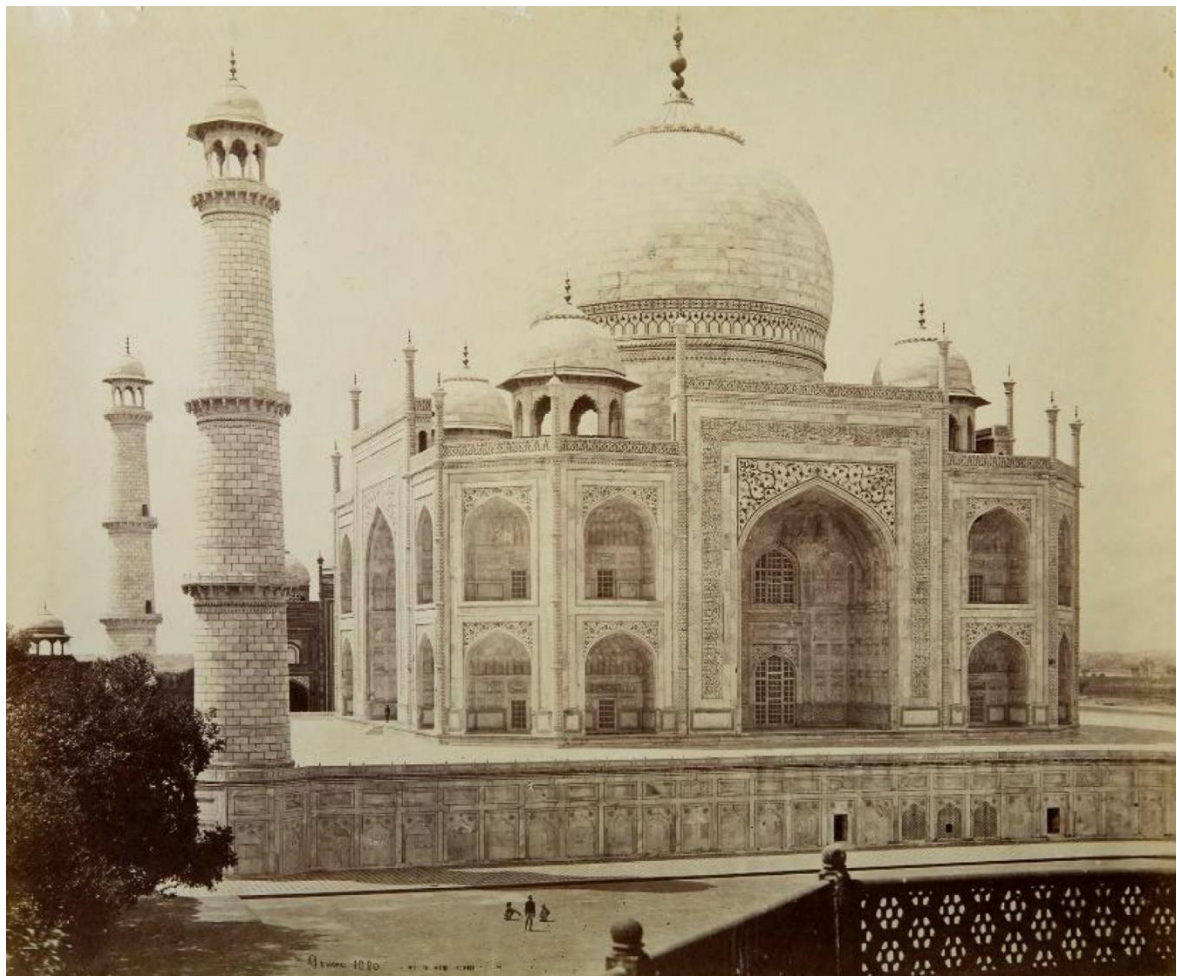
Nathaniel Gaskell, curator:

‘While this exhibition takes the context of colonialism as an entry point – both chronologically and conceptually – the historical arc of photography in India extends far beyond this initial point of contact, encompassing a range of shifts in artistic, cultural and political attitudes, and other voices who exist outside the traditional canon.’

‘With this exhibition, we will uncover not only the primary history of the genre, but also the multiple parallel and lesser-known photographic practices in the subcontinent that re-emphasise the diverse and socially significant story of Indian photography.’



Karen KNORR The Queen's room, Zanana, Udaipur City Palace, Udaipur
2010 pigment ink-jet print. Museum of Art & Photography (MAP) (Bengaluru)



Samuel BOURNE Taj Mahal, Agra c. 1860 albumen print
Museum of Art & Photography (MAP) (Bengaluru)



JOHNSTON & HOFFMANN Maharaja Sir Bhagwati Prasad Singh 1915 hand-painted albumen print
Museum of Art & Photography (MAP) (Bengaluru)



Suresh PUNJABI Untitled (Portrait of a man holding a bird), Suhag Studio, Nagda, Madhya Pradesh 1987
Museum of Art & Photography (MAP) (Bengaluru)



Suresh PUNJABI Untitled (Full-length portrait of a man), Suhag Studio, Nagda, Madhya Pradesh 1985
pigment ink-jet print Museum of Art & Photography (MAP) (Bengaluru)

City West Walk, Melbourne CBD

Mid-Week Outing Group

1 Mar 2022

City West Outing – Tuesday 1st March, 10.30am

The next Melbourne Camera Club Mid-Week Outing will provide a chance to use your camera, and also provide an opportunity to visit a part of the city we have not previously visited – City West.

Some of the new buildings in Spencer Street are very different – especially Premier Tower on the corner of Spencer and Bourke.

But, if you prefer the more traditional, you can stroll up to William Street, to find Supreme Court, the old Titles Office building and Victoria University.

We shall meet at Benny's Bakery Cafe, 3/567 Collins St. at 10.30 am. [Google Maps](#) (Note: Not Benny's in Lonsdale St nor Kenny's Bakery Cafe)

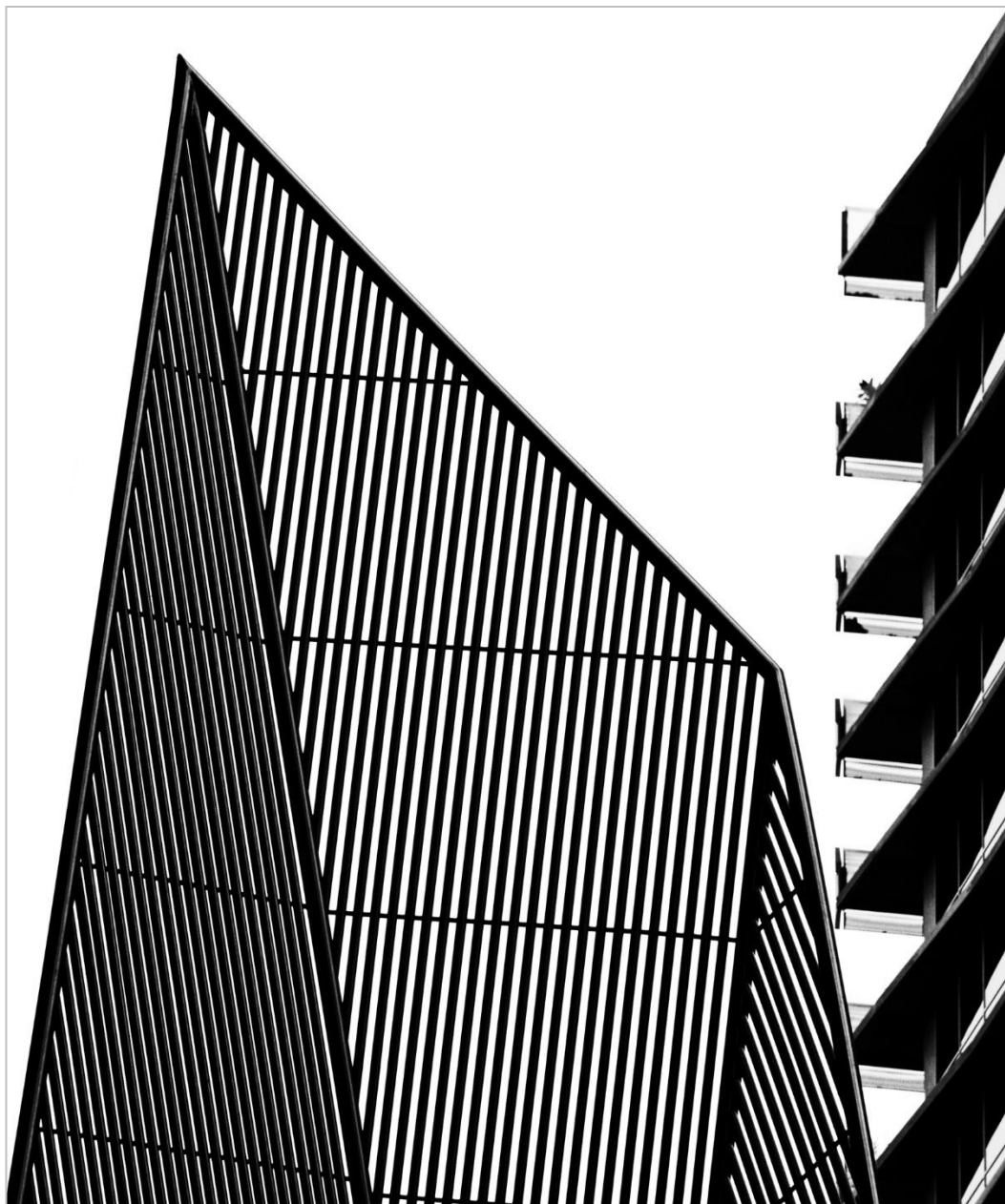
If you enter the plaza next to Buddabah, below the Virgin Active Health Club sign, Benny's is straight ahead.

Lunch will be at the Mail Exchange Hotel, 688 Bourke Street, cnr. of Spencer Street. [Google Maps](#)

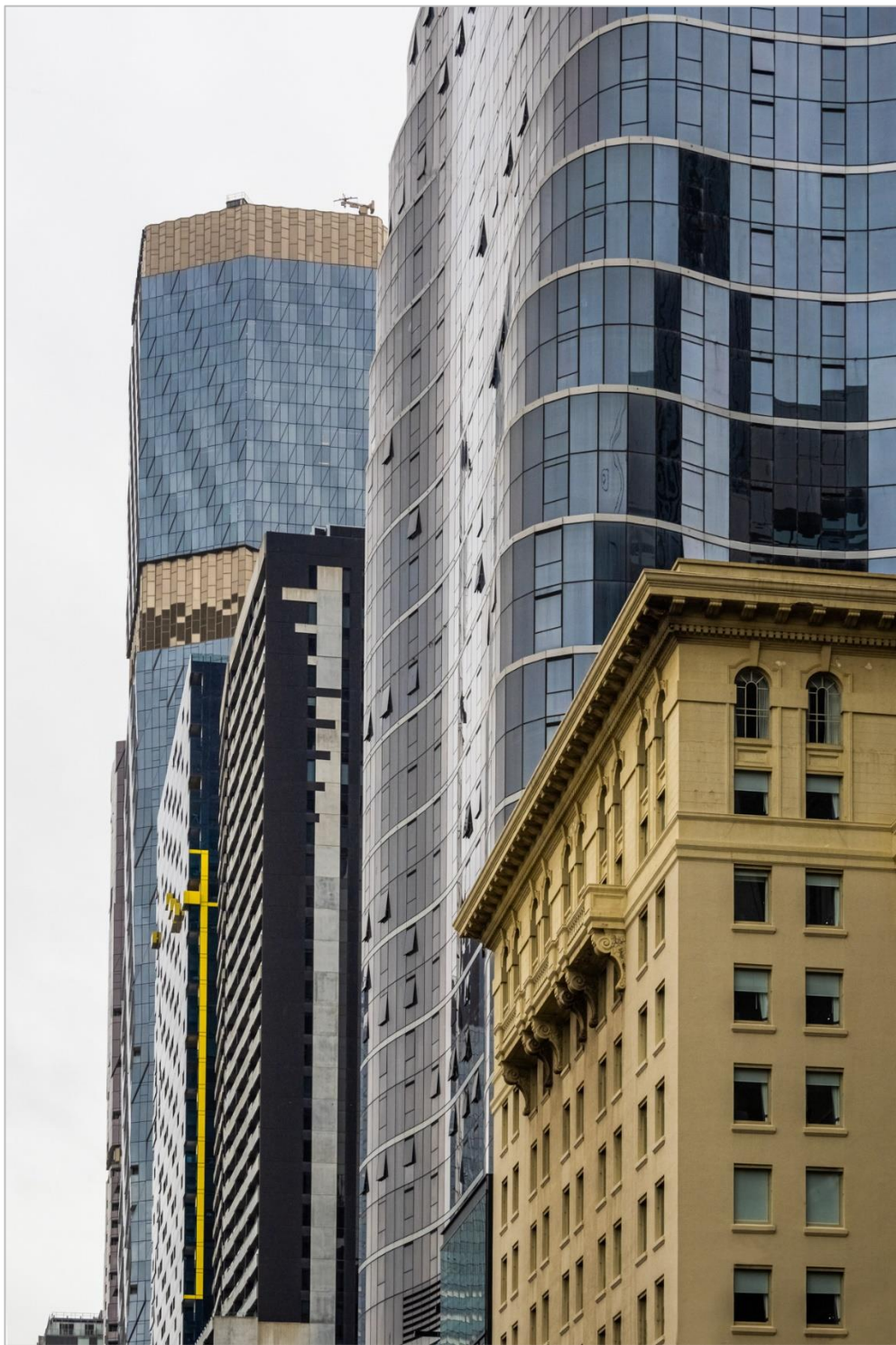
The outing will be run in a Covid Safe way, so the Melbourne Camera Club will keep the appropriate records. We require participants to be at least double vaccinated, and abide by all other covid requirements.

We have a reciprocal arrangement with the Camberwell Camera Club for our Mid-Week Outings. Camberwell members are always welcome.

Jim Weatherill



City West Outing (Robert Fairweather ©)



City West Outing (Robert Fairweather ©)



Paul Palcsek (Robert Fairweather ©) City West Outing



City West Outing (Robert Fairweather ©)



City West Outing (Robert Fairweather ©)

Maranoa Gardens, Balwyn

Mid-Week Outing Group

22 Mar 2022

The Maranoa Gardens in Balwyn are one of Melbourne's little known gems.

They are really a mini-botanical garden with distinct rain forest, dry eucalypt and arid environment patches.

Adjacent is Beckett Park with its native bush reserve.

This will be the destination for the next Camberwell CC excursion.

Meeting place: 10.30 am at [Laurent Bakery Balwyn](#), 300 Whitehorse Road (just east of the intersection with Balwyn Road).

There is parking behind the bakery.

Then we will drive a short distance and turn left into Parring Road that takes us to the car park in [Maranoa Gardens](#) (Melway 46F7).

After our walk through the Gardens we drive westwards along Whitehorse Road to [Augello's Balwyn Ristorante & Pizzeria](#) at 200 Whitehorse Road (diagonally opposite the Balwyn Cinema).

Parking is available either along Whitehorse Road, or off street parking at Balwyn Park oval on the left before we get to the restaurant.

Look forward to seeing many of you, including Camberwell CC friends there!

Joe Hajdu



Jumping spider – *Servae Marano* (Nicole Andrews ©) Maranoa Gardens Outing



Live Leaf Curling Spider (Nicole Andrews ©) Maranoa Gardens Outing



Maranoa Gardens Outing (Robert Fairweather ©)



Maranoa Gardens Outing (Robert Fairweather ©)



John Adlam (Robert Fairweather ©) Maranoa Gardens Outing



Maranoa Gardens Outing (Robert Fairweather ©)

Heidi Museum of Modern Art, Bulleen

Mid-Week Outing Group

5 Apr 2022

The Melbourne Camera Club Mid-Week Outing for April is to the **Heidi Museum of Modern Art**, 7 Templestowe Road, Bulleen. [Google Maps](#)

This will be on Tuesday 5th April 2022 (the first Tuesday of the month) at the usual time of 10.30am.

There is a charge to visit Heidi – the usual adult rate is \$20, however on Tuesdays the rate for Seniors is \$15. (Manningham residents – free). As well as the Museum of Modern Art, Heidi offers a fine garden and a sculpture park, so bring your camera.

You may care to check out their website to help maximize your visit, and learn of their Covid requirements.

[Heidi Museum of Modern Art](#)
[Under Lamplight Albert Tucker And Patrick Pound](#)
[House of Ideas Cynthia Reed's Studio](#)
[Dean Cross Sometimes I Miss the Applause](#)

There is also a café – where we will meet on arrival for coffee, and also lunch.

The outing will be run in a Covid Safe way, so the Melbourne Camera Club will keep the appropriate records. We will also comply with any Covid requirements imposed by the host organization. We require participants to be at least double vaccinated, and not to come if you are suffering from any Covid like symptoms.

We have a reciprocal arrangement with the Camberwell Camera Club for our Mid-Week Outings. Camberwell members are always welcome.

Hope to see you at Heidi on Tuesday 5th April at 10.30am.

The Museum is a 30min walk from Heildeberg station on the Hurstbridge Line.
[Google Maps](#)

Jim Weatherill



Heidi Outing (Nicole Andrews ©)



Heidi Outing (Nicole Andrews ©)



Heidi Outing (Nicole Andrews ©)

Jells Park, Wheelers Hill

Mid-Week Outing Group

27 Apr 2022

Mid-Month Excursion - Wednesday, 27th April

The destination for our excursion is Jells Park (Melway71K6). [Jells Park \(Google Maps\)](#)

This park has large areas of natural bushland, with a nature reserve with a lake at its centre.

There are a number of bird-viewing platforms on the shore of the lake. Ideal sites for photography.

For the more energetic of us, there is a 2.5km walking trail in the bush around the lake and its wetlands.

Jells Park is a welcome large green wedge in the Melbourne Metropolitan Area. Definitely worth a visit with a camera.

Meeting time/place: 10.30am at the Madeline's at Jells Café in the park. [Madeline's at Jells Café \(Google Maps\)](#)

There are a number of parking areas within the park not very far from the Café.

After our activity around the lake, we will return to the Café for lunch.

All of you are most welcome to join us.

Joe Hajdu

Photo 2020 Exhibition, Melbourne CBD

Mid-Week Outing Group

3 May 2022

The Melbourne Camera Club Mid-Week Outing for May will be to Photo 2022 – this photography event is being held in Melbourne from 29th April to 22nd May, with a theme “Being Human”.

We will meet on the first Tuesday in May, May 3rd at the usual time of 10.30am at the food court in Collins Place for coffee etc. [Collins Place - Google Maps](#)

There are 5 Melbourne precincts where Photo 2022 exhibits are being shown:

Town Hall (11), **Parliament (20)**, River (7), State Library (11) and Fitzroy/Collingwood (18).

Our plan is to visit the **Parliament precinct** - however as many of the exhibits are outdoors, should the forecast be for inclement weather there could be a late change to another precinct. We will keep you informed.

The plan is to visit exhibitions in Flinders Lane and Collins Street and then work our way up to Spring Street and the outdoor exhibitions.

The lunch venue is to be advised.

The outing will be run in a Covid Safe way, so the Melbourne Camera Club will keep the appropriate records. We will also comply with any Covid requirements imposed by host organizations. We require participants to be at least double vaccinated, and not to come if you are suffering from any Covid like symptoms.

We have a reciprocal arrangement with the Camberwell Camera Club for our Mid-Week Outings. Camberwell members are always welcome.

A visit to the Photo 2022 website is recommended, whether or not you are planning on coming to the outing.

- [Photo 2022 Melbourne - Being Human](#)
- [Locations](#) > scroll down to **Parliament Precinct** > Click on one of the events > scroll down and click on **View On Map** to see the location of all events

Hope to see you on Tuesday 3rd May at 10.30am at Collins Place. [Collins Place - Google Maps](#)

Jim Weatherill

The Nikon-Walkley Press Photography Awards Exhibition Mid-Week Outing Group 18 May 2022

The Nikon-Walkley Press Photography Awards are one of the most important example of outstanding current affairs photography.

The images of the latest finalists are being exhibited at the Focal Point Gallery in North Geelong. Our May excursion will be to go and see these stunning images.

[Focal Point Gallery - 2021 Nikon-Walkley Photography Exhibition](#)

The Gallery owner, Craig Watson, has been most helpful in helping to organize our visit. On our arrival he will be waiting for us with a cup of coffee.

Time: We plan to catch the Geelong train at Southern Cross Station departing at 9.30am.

We need to disembark at North Geelong Station and the Focal Point Gallery is a short walk from there (at 46 Douro Street).

[46 Douro Street - Google Maps](#)

Entry fee: \$10

After viewing the exhibition, we will proceed to the Bean & Base Café for lunch (159 Melbourne Road).

[Bean & Base Cafe Bar - Google Maps](#)

This is a great opportunity to see one of the highlights of top photo journalism. Not be missed.

Joe Hajdu



Walkley Photojournalism Exhibition Outing (Paul Palcsek ©)

Immigration Museum, Melbourne CBD

Mid-Week Outing Group

7 Jun 2022

Melbourne Camera Club Mid-Week Outing – Tuesday 7th June, 2022.

The [Immigration Museum](#) will be the first Mid-Week Outing for June.

It is located in the Old Custom House, [400 Flinders Street](#), Melbourne, west of Flinders St. Station.

Admission price is \$15, Seniors \$10, and for some other concession cards it is free.

We will meet for coffee etc. at the Upstanding Citizen Café, [452 Flinders Lane](#), south west crn. Of Flinders Lane and Custom House Lane at 10.30 am.

Lunch will be at Vapiano, [357 Flinders Lane](#) at 12.30 p.m.

We have a reciprocal arrangement with the Camberwell Camera Club for our Mid-Week Outings. Camberwell members are always welcome.

Hope to see you on Tuesday 7th June at 10.30am at the Upstanding Citizen.

Jim Weatherill

Attendees (15): Anne Shellard, Bob Clothier, David Dyett, Hee Kang, Jan Mallett, Jill Edwards, Jim O'Donnell, Jim Weatherill, John Mallett, Leif Andersen, Marg Huxtable, Paul Palcsek, Richard Lang, Robert Fairweather, Terry Noske



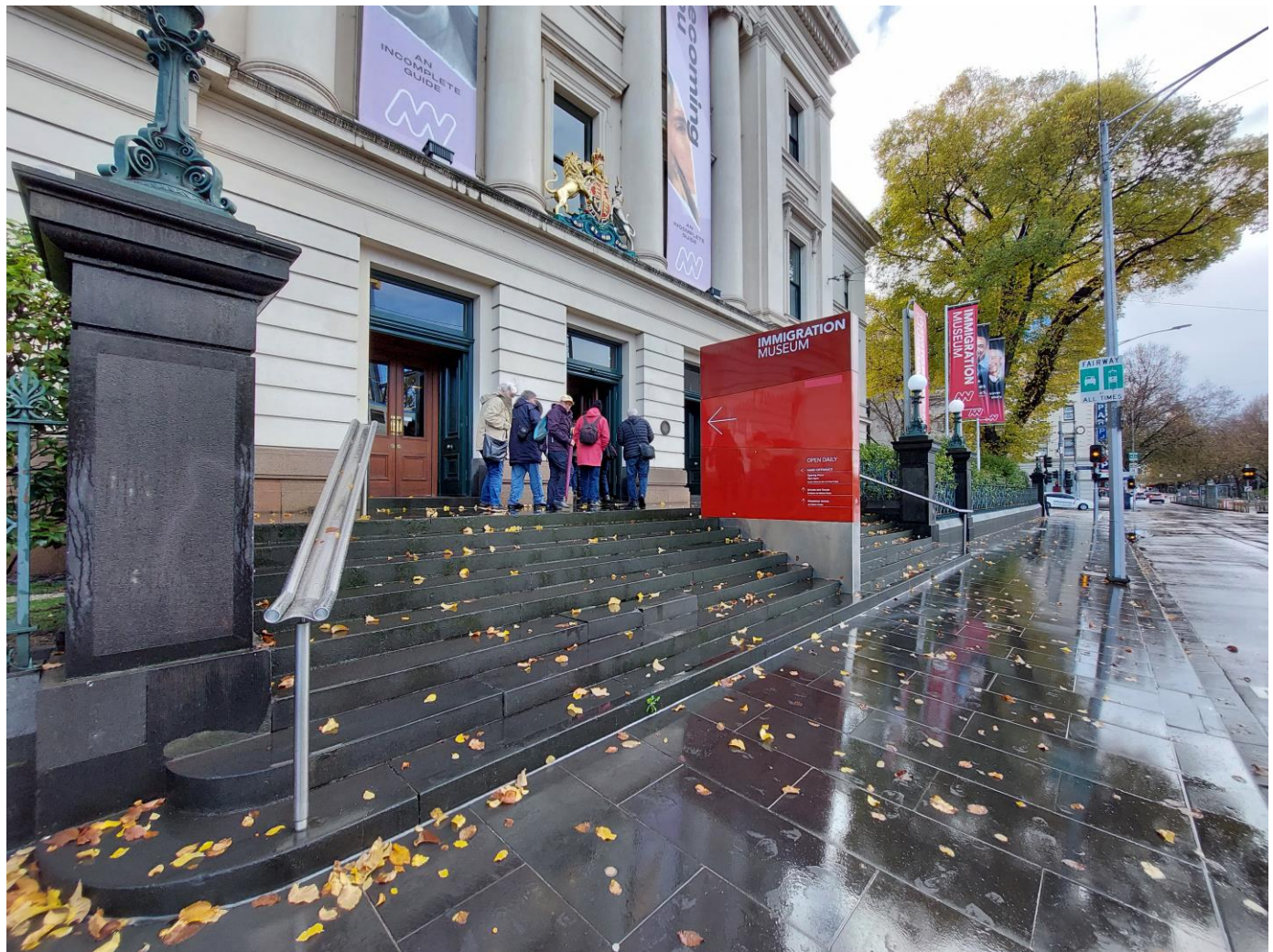
Immigration Museum Outing (Paul Palcsek ©)



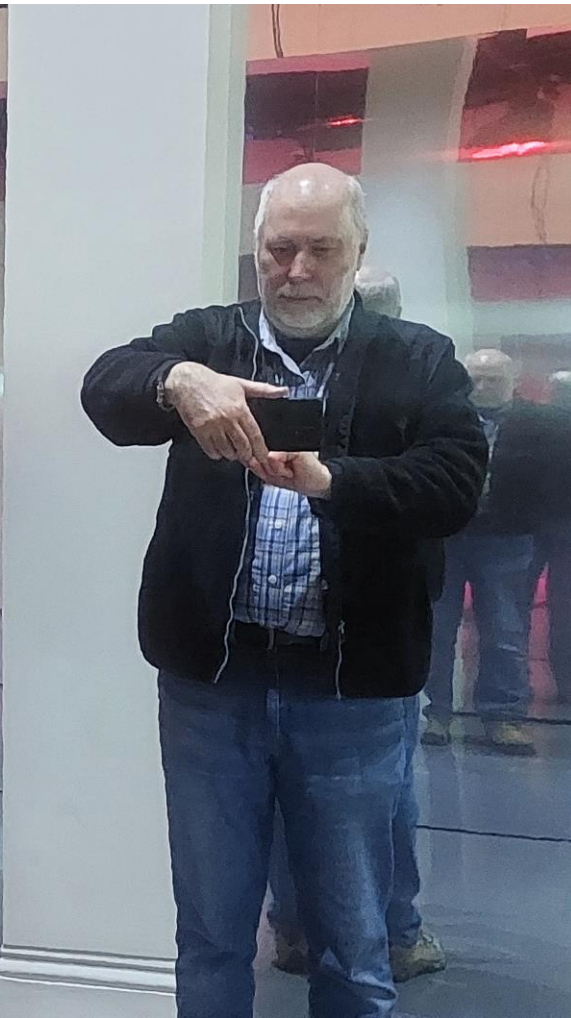
Immigration Museum Outing (Paul Palcsek ©)



Immigration Museum Outing (Paul Palcsek ©)



Immigration Museum Outing (Paul Palcsek ©)



Hee Kang & Paul Palcsek (Paul Palcsek ©) Immigration Museum Outing



Immigration Museum Outing (Paul Palcsek ©)



Immigration Museum Outing (Terry Noske ©)



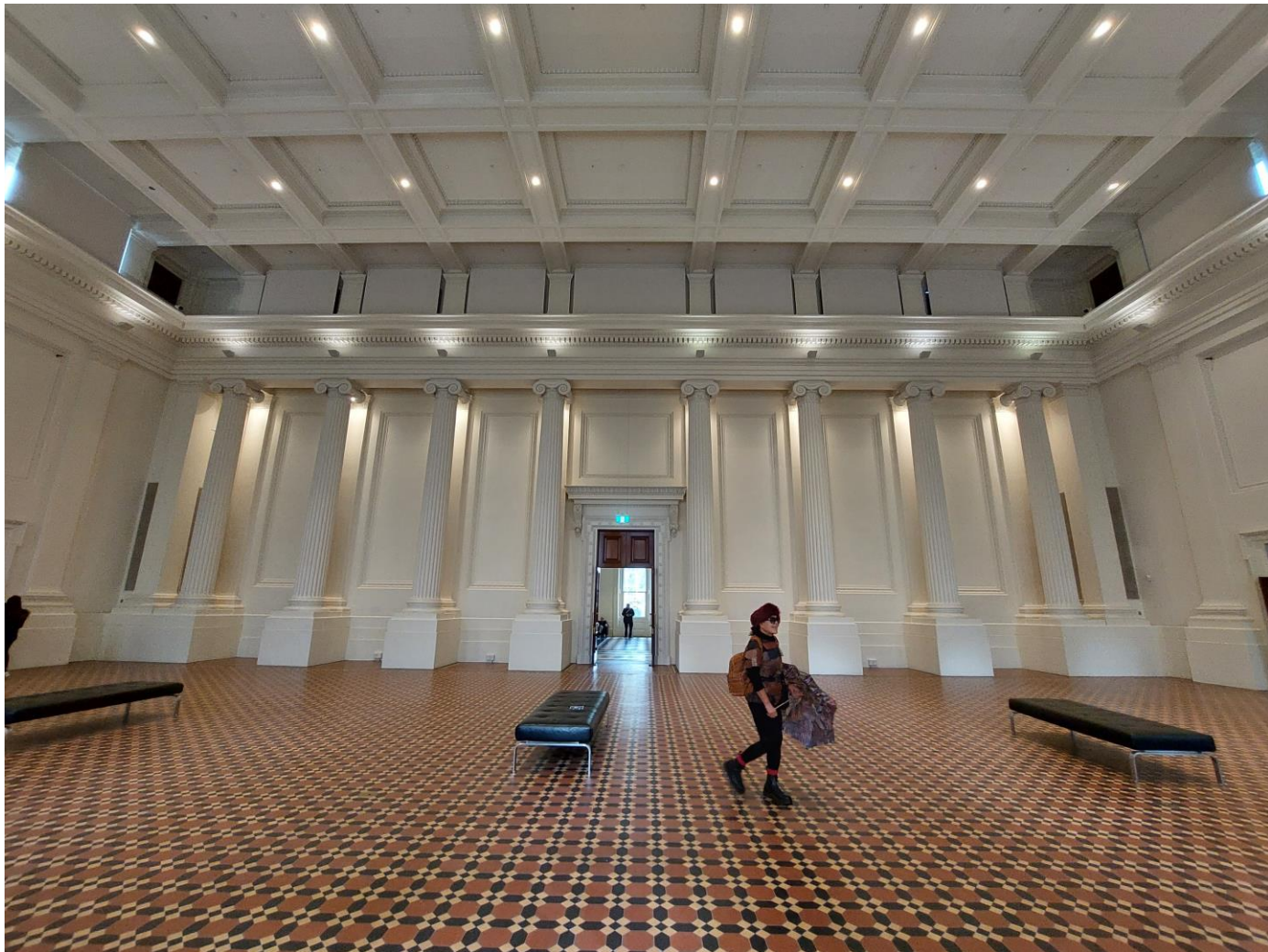
Immigration Museum Outing (Terry Noske ©)



Immigration Museum Outing (Terry Noske ©)



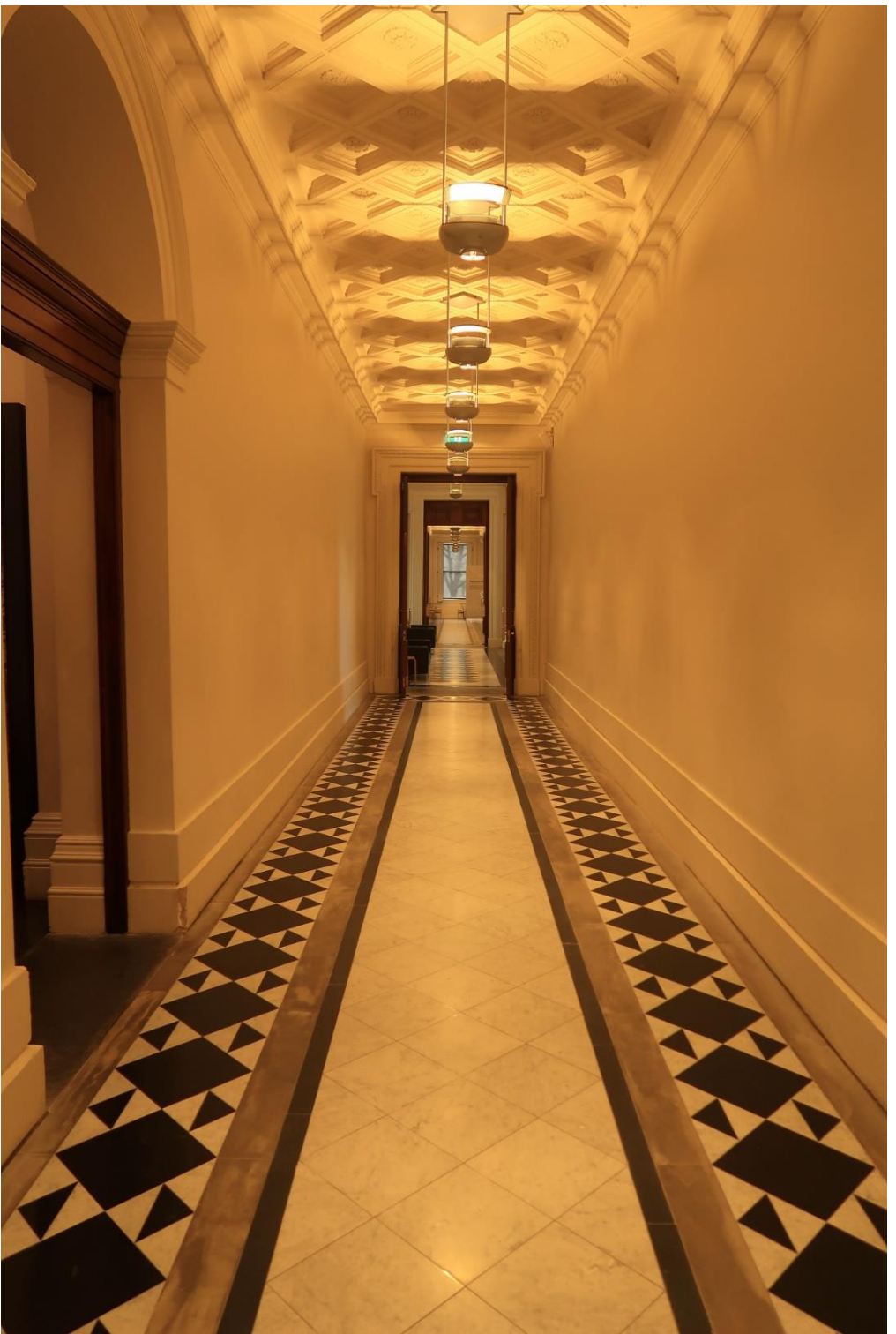
Immigration Museum Outing (Paul Palcsek ©)



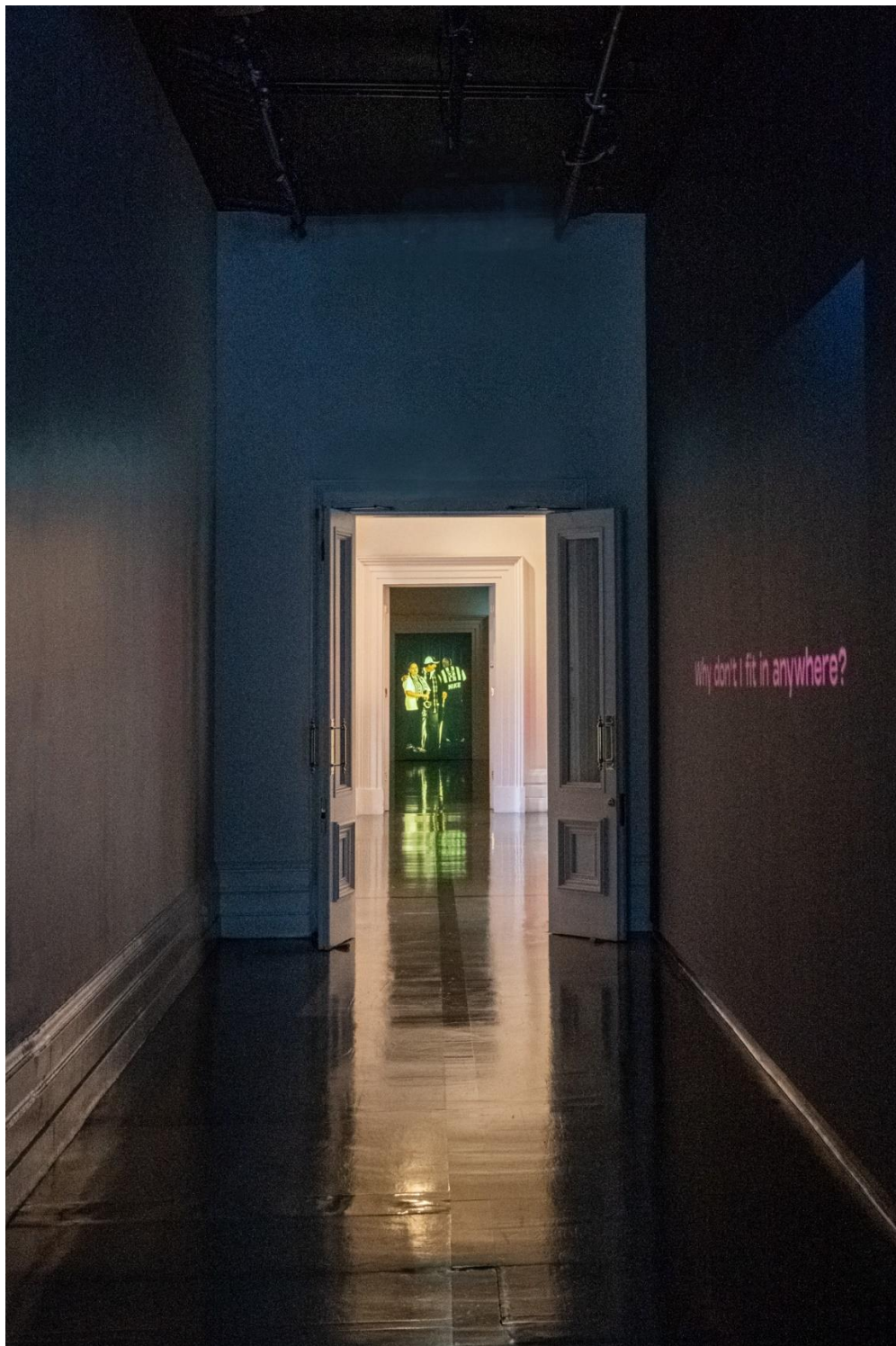
Immigration Museum Outing (Paul Palcsek ©)



Immigration Museum Outing (Robert Fairweather ©)



Immigration Museum Outing (Terry Noske ©)



Immigration Museum Outing (Robert Fairweather ©)



Immigration Museum Outing (Robert Fairweather ©)



Immigration Museum Outing (Robert Fairweather ©)



Immigration Museum Outing (Paul Palcsek ©)



Immigration Museum Outing (Paul Palcsek ©)

Magnet Gallery

Mid-Week Outing Group

21 Jun 2022

We will be visiting Michael Silver's Magnet Gallery next Tuesday.

Transport wise: Take train to Flinders St Station and then either [tram 35](#) or [tram 70](#) in Flinders St. Free Tram Zone.

Also [tram 86](#): Docklands, La Trobe St, Spencer St, Bourke St, Spring St, etc.

Alight at [stop D11](#) (Waterfront City).

There are also a number of carpark nearby.

[Tram Network Map](#)

We will start at 10.30 am with the usual coffee etc. at Corsia Café which is in [Wharf Street](#), close to Docklands Drive and at the rear entrance to the Marriott Hotel.

The gallery is at [19 Wharf St.](#), Docklands, however the Wharf St sign is rather invisible, and Wharf Street is semi-enclosed from Docklands Drive, with a sign above street level saying The District, Docklands and at ground level there is a big red sign for the Hoyts cinema. The gallery is very close to Melbourne's big wheel, which is north of Wharf Drive.

There is a small admission fee for the gallery which is a not for profit making organization.

And lunch will be at the [Urban Alley Brewery](#) 9/12 Star Circus, Docklands.

Jim Weatherill



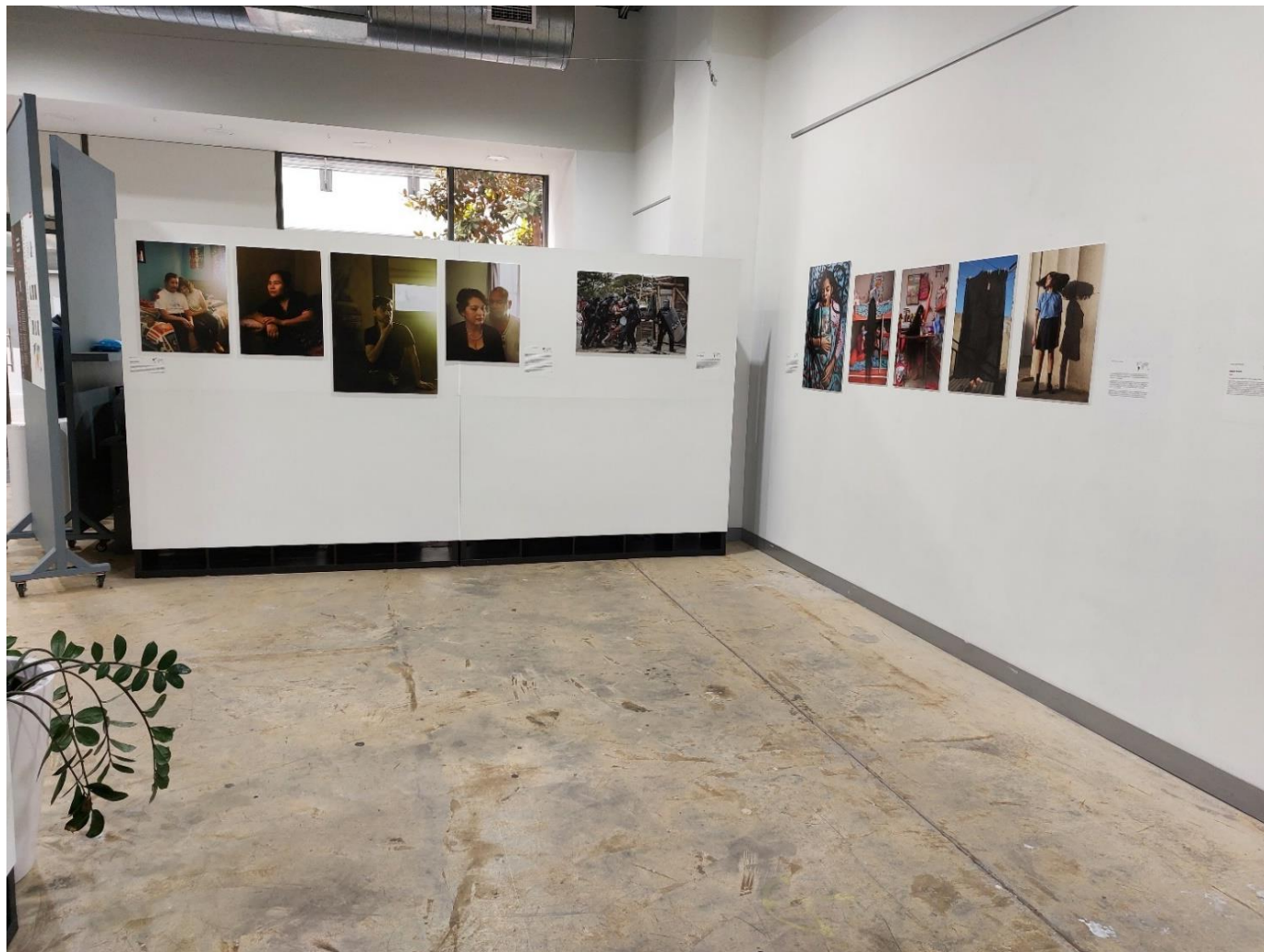
Magnet Gallery Outing (Paul Palcsek ©)



Magnet Gallery Outing (Paul Palcsek ©)



Magnet Gallery Outing (Paul Palcsek ©)



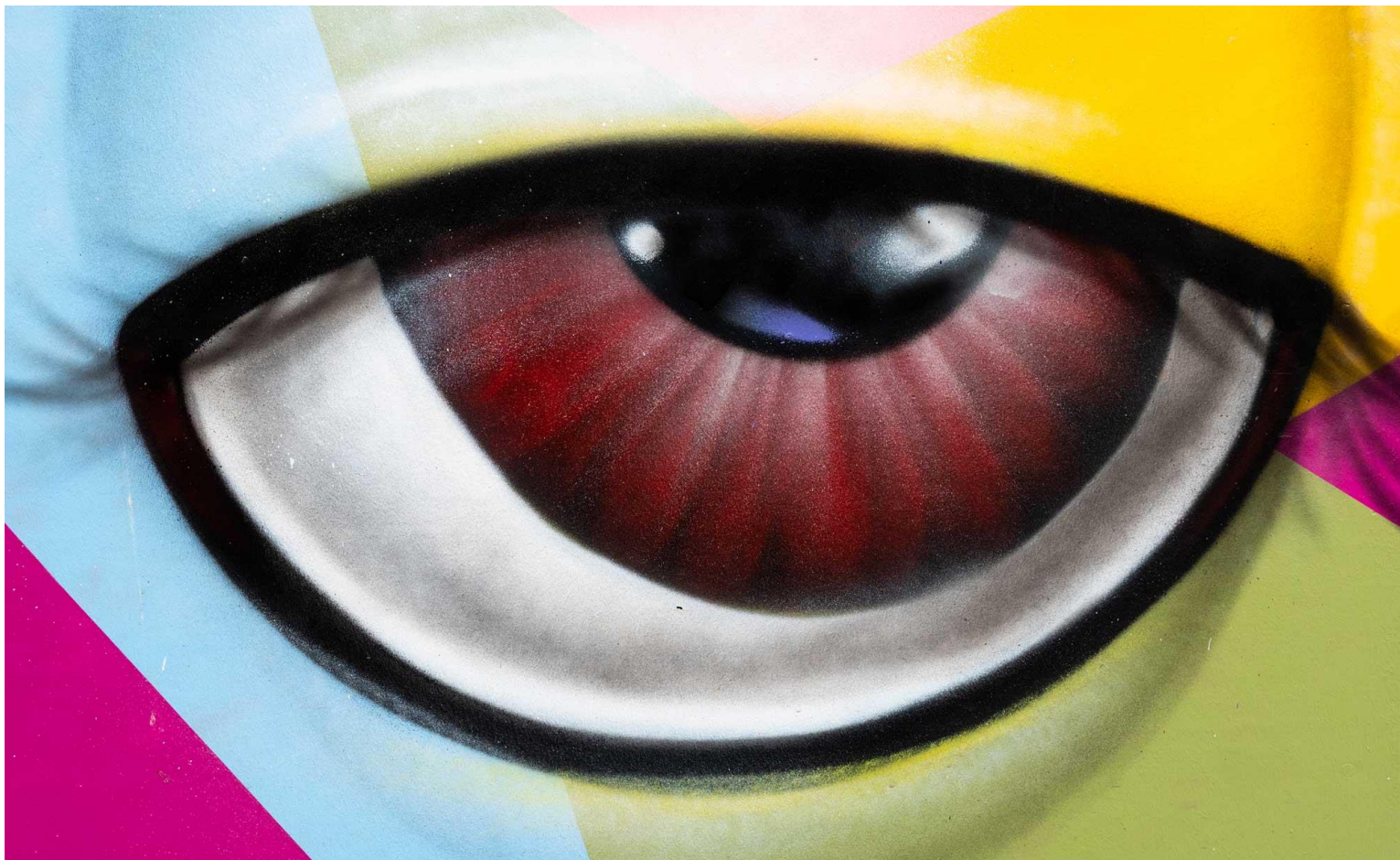
Magnet Gallery Outing (Paul Palcsek ©)



Magnet Gallery Outing (Terry Noske ©)



Magnet Gallery Outing (Nicole Andrews ©)



Magnet Gallery Outing (Nicole Andrews ©)



Magnet Gallery Outing (Paul Palcsek ©)



Magnet Gallery Outing (Paul Palcsek ©)



Magnet Gallery Outing (Paul Palcsek ©)

Bathing Boxes, Brighton

Mid-Week Outing Group

5 Jul 2022

Mid-Week Outing – Tuesday 5th July, 2022

The iconic [Bathing Boxes, Brighton](#).

Okay so it is winter, but I have been assured that the Bathing Boxes make great photographic subjects, summer or winter, rain or shine.

We will use the [Brighton Beach Hotel](#), close by the [Brighton Beach Railway Station](#), as our base.

For those driving, the address is 4 The Esplanade, Brighton; just north of South Road. The hotel has a large car park.

The plan is we will meet at the hotel for coffee etc. at 10.30 am.

At approximately 11am we will drive to the bathing boxes (south end), parking in [Norwood Avenue](#) (opposite the bathing boxes, one hour parking & no meters) and then return to the hotel for lunch about 12.15pm.

Those using public transport can get a lift to the boxes and back to the hotel.

Camberwell Camera Club members are welcome – Melbourne and Camberwell members have reciprocal rights to these outings.

Jim Weatherill

Attendees (18): Anne Shellard, Annette James, Bob Clothier, Gerry Silk, Graeme Diggle, Jan Mallett, Jim O'Donnell, Jim Weatherill, John Adlam, John Mallett, Julie Mitchell, Ken Gosbell, Leif Andersen, Marg Huxtable, Michael Brown, Nicole Andrews, Paul Palcsek, Susan Rocco



Brighton Beach Hotel - Bathing Boxes Outing (Bob Clothier ©)



Bathing Boxes Outing (Bob Clothier ©)



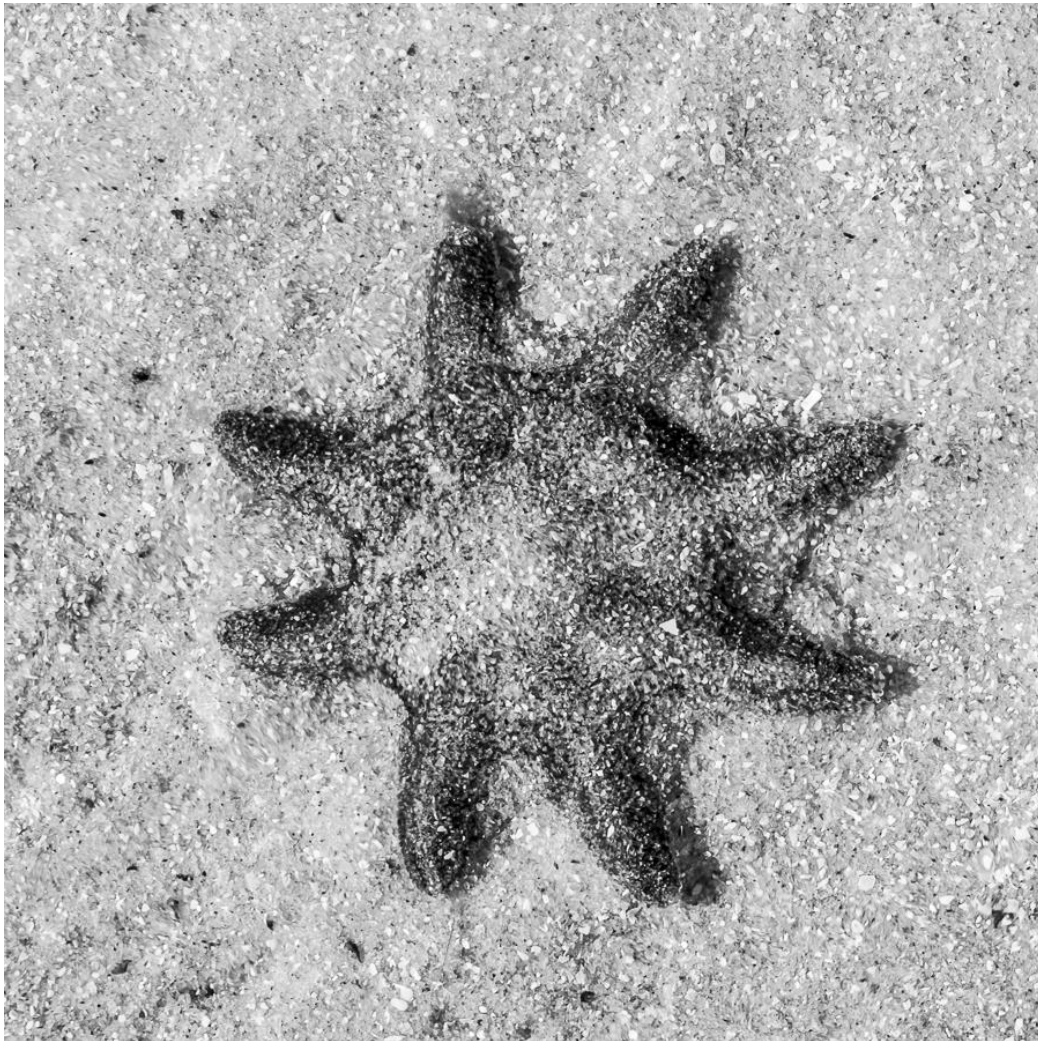
Bathing Boxes Outing (Bob Clothier ©)



Bathing Boxes Outing (Bob Clothier ©)



Bathing Boxes Outing (Nicole Andrews ©)



Bathing Boxes Outing (Ken Gosbell ©)



Bathing Boxes Outing (Bob Clothier ©)



Bathing Boxes Outing (Ken Gosbell ©)



Carpet-Seastar (Nicole Andrews ©) - Bathing Boxes Outing



Bathing Boxes Outing (Ken Gosbell ©)



Bathing Boxes Outing (Bob Clothier ©)



Bathing Boxes Outing (Bob Clothier ©)



Bathing Boxes Outing (Ken Gosbell ©)

Collins Street Walk, Melbourne CBD

Mid-Week Outing Group

19 Jul 2022

On Tuesday 19th we will be strolling and photographing outdoors in Collins Street. A couple of our members have said that Collins Street in winter, when there are no leaves on the trees to hide the buildings, would make a good outing. So we will try that.

Why the change from the Chinese Museum? After the scare last outing, which fortunately was limited to only one member, it was a reminder that Covid 19 is still with us, and we need to be constantly on guard and take no unnecessary risks. Also, the Museum advised that we could not have a guided during our visit, because 70 school children were already booked in. Guided tour or not, that many school children means that the Museum will be very busy, and photo opportunities limited: hence the change.

The plan is to stroll downhill along Collins St from Spring St to Queen St.

We will meet at [Café 60](#), which is located at 60 Collins Street at 10.30am, the north side of the street, near Exhibition Street.

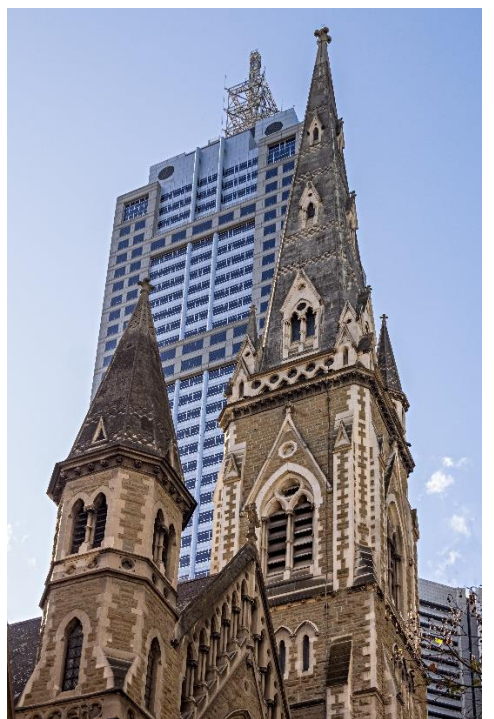
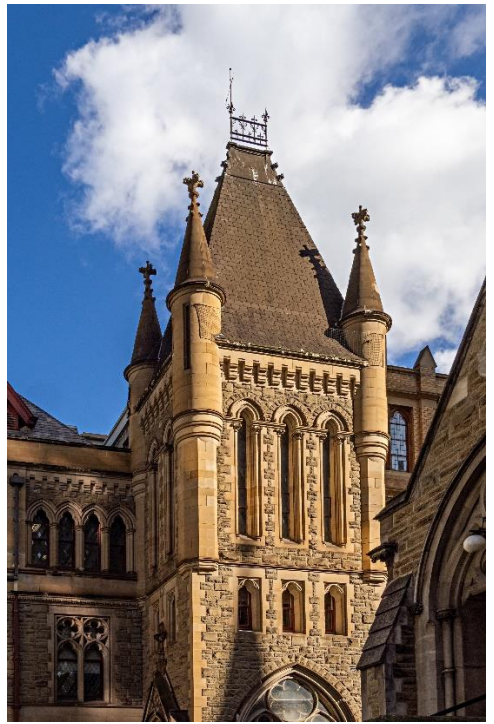
Then we can double back to Spring Street to start our walk down Collins St. and finish up for lunch at [Natural History Public Bar](#), 401 Collins Street, just over Queen Street, on the south side of Collins.

We request that if you have any covid or flu symptoms that you do not attend. There will be plenty more outings when you are fully fit.

Melbourne and Camberwell Camera Club members have reciprocal rights to these outings.

Jim Weatherill

Attendees (16): Anne Shellard, Bob Clothier, Hee Kang, James Mexias, Jan Mallett, Jane Clancy, Jim Weatherill, John Mallett, Leif Andersen, Marg Huxtable, Michael Brown, Norman Blaikie, Richard Lang (Canon), Richard Lang (Nikon), Robert Fairweather, Terry Noske



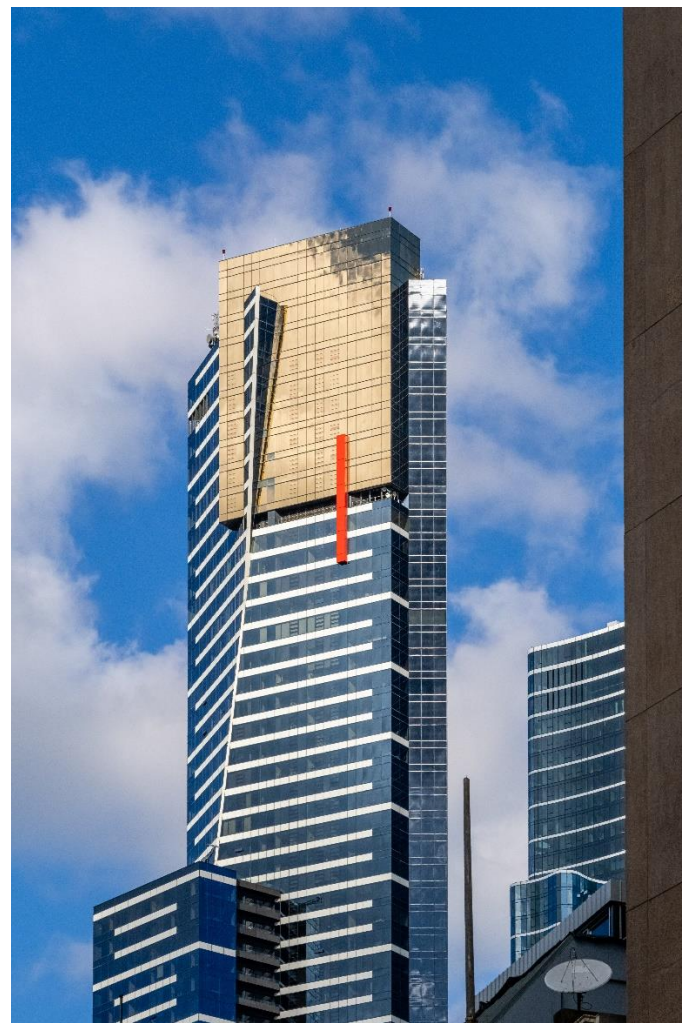
Collins Street Outing (Robert Fairweather ©)



Collins Street Outing (Bob Clothier ©)



Collins Street Outing (Terry Noske ©)



Collins Street Outing (Robert Fairweather ©)



Collins Street Outing (Bob Clothier ©)



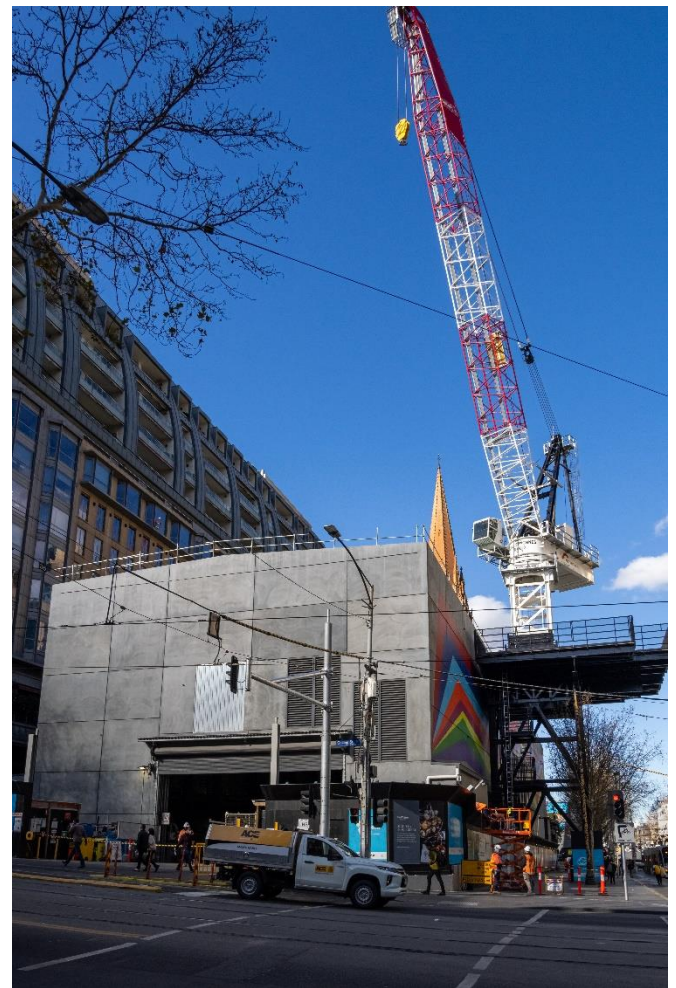
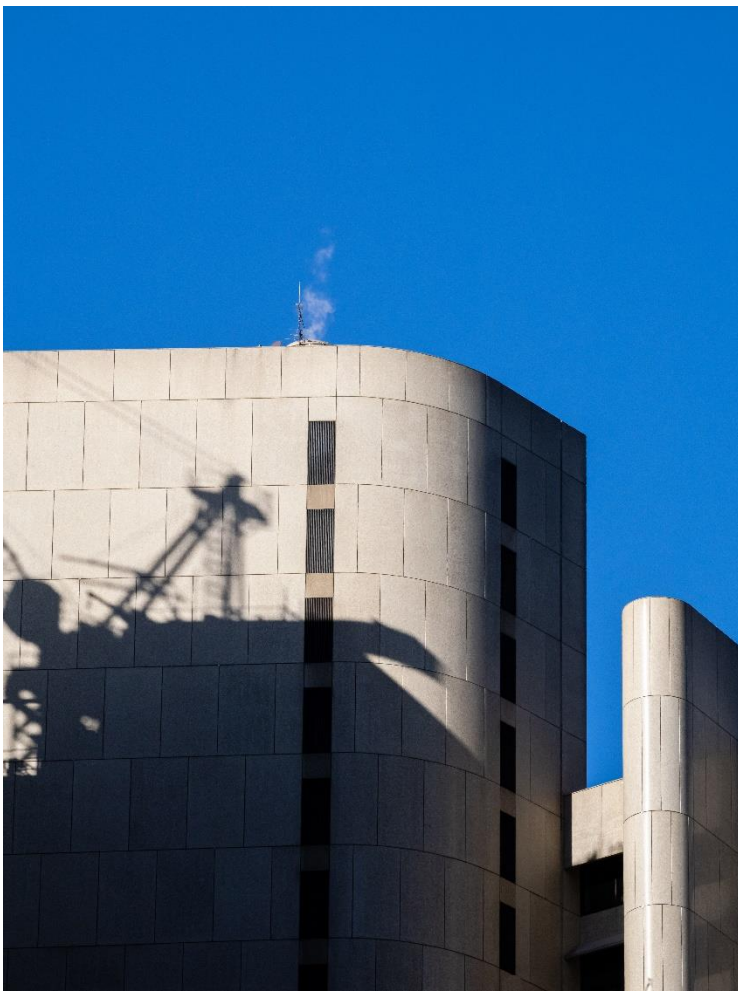
Collins Street Outing (Bob Clothier ©)



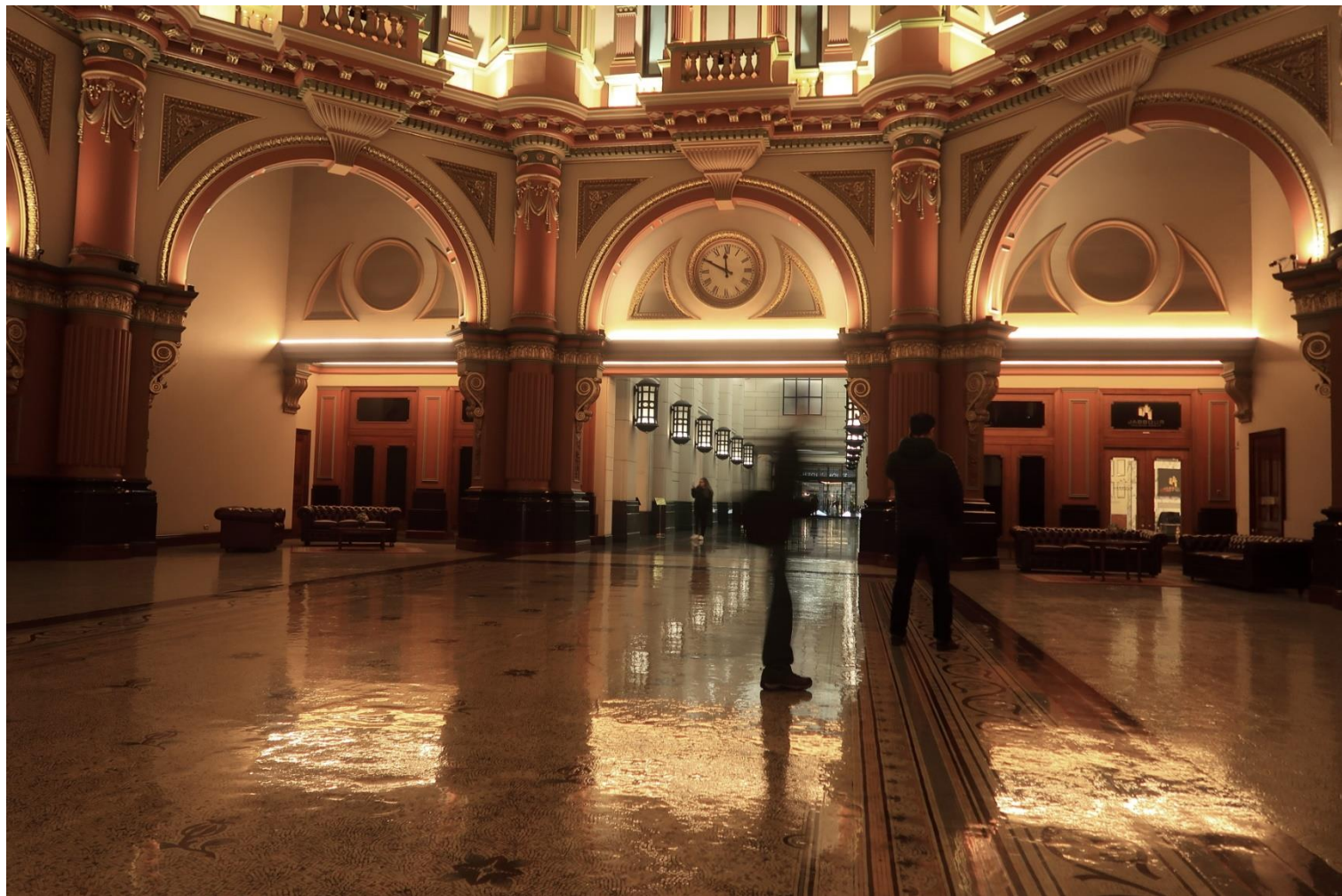
Collins Street Outing (Bob Clothier ©)



Collins Street Outing (Terry Noske ©)



Collins Street Outing (Robert Fairweather ©)



Collins Street Outing (Terry Noske ©)



Collins Street Outing (Robert Fairweather ©)



Collins Street Outing (Robert Fairweather ©)



Collins Street Outing (Robert Fairweather ©)



Collins Street Outing (Terry Noske ©)



Collins Street Outing (Terry Noske ©)



Collins Street Outing (Terry Noske ©)



Collins Street Outing (Robert Fairweather ©)